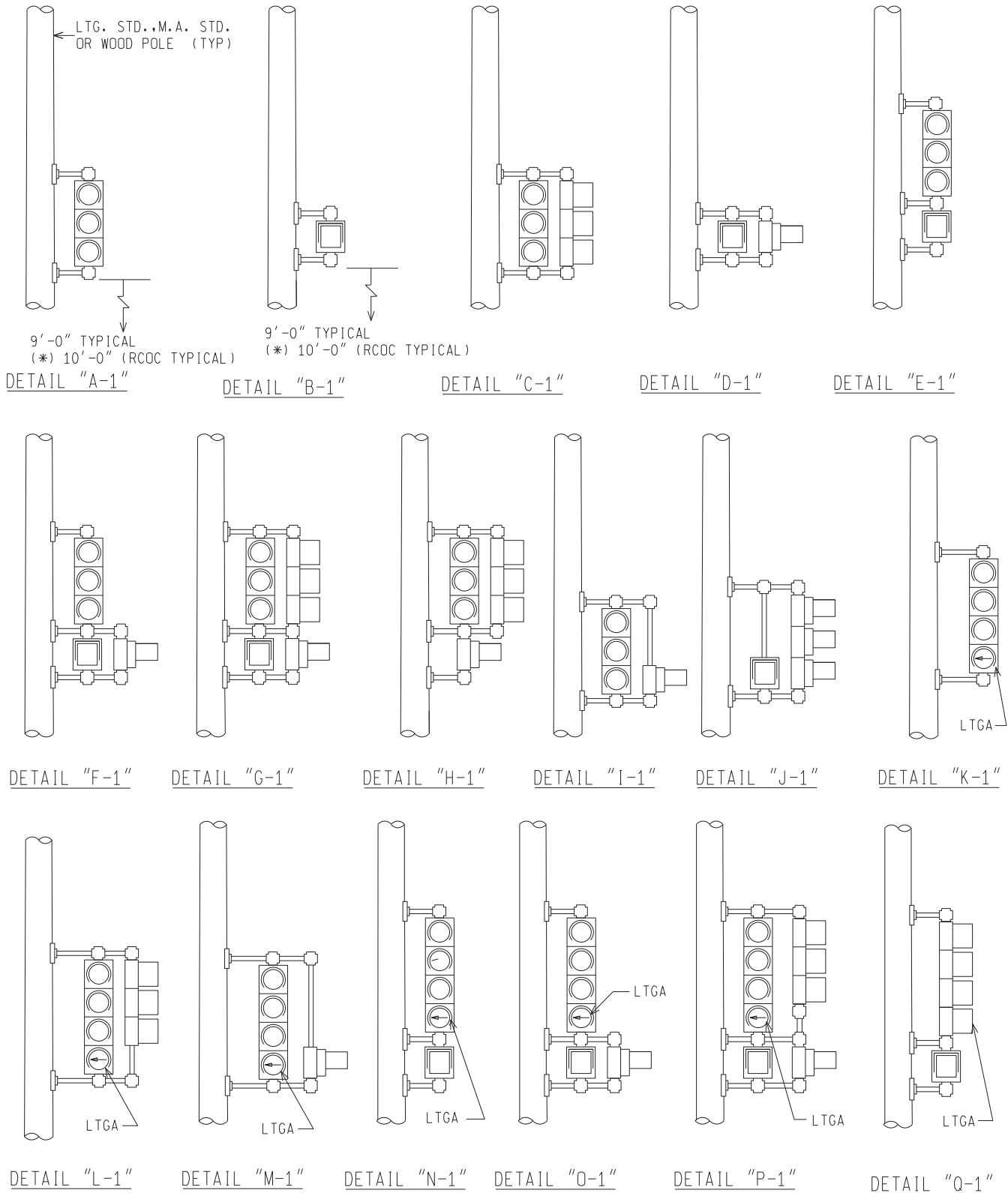


(*) Refer to Note 5 on Sheet 2 of 2.



NOT TO SCALE

File: RefDoc/TR/Signals/Web/Sp Det/Fin/SIG340A.dgn Rev: 02/16/17



PREPARED BY
TRAFFIC AND SAFETY

DRAWN BY:
CHECKED BY:

ENGINEER OF DELIVERY

ENGINEER OF DEVELOPMENT

(SPECIAL DETAIL)
FHWA APPROVAL DATE

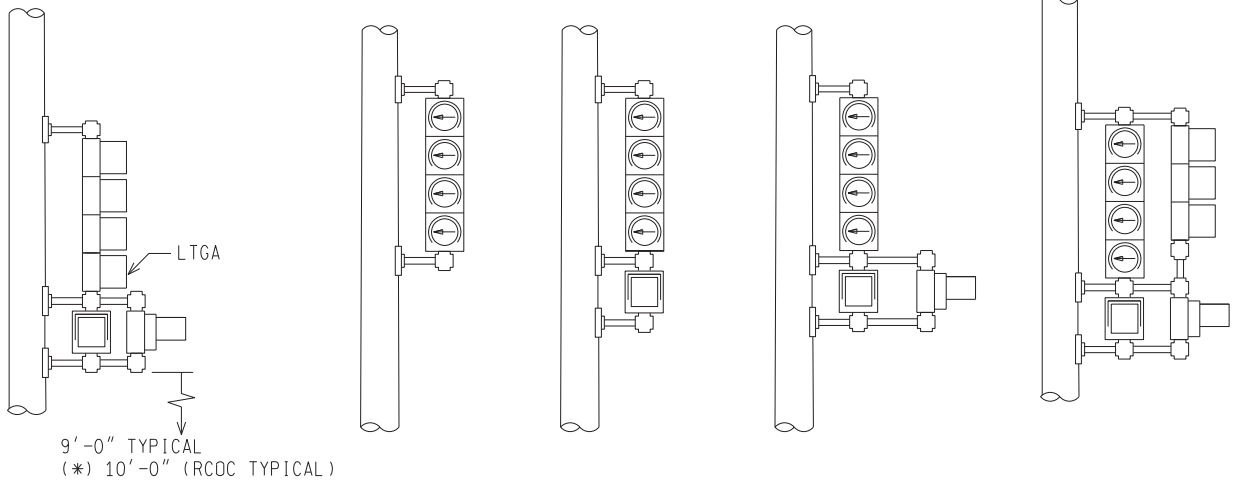
MICHIGAN DEPARTMENT OF TRANSPORTATION
BUREAU OF HIGHWAYS DELIVERY STANDARD PLAN FOR

POLE MOUNTED
SIGNAL DISPLAYS

PLAN DATE

SIG-340-A

SHEET
1 of 2



DETAIL "R-1"

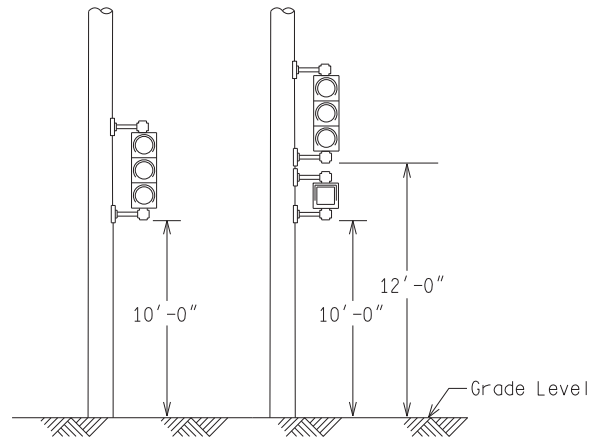
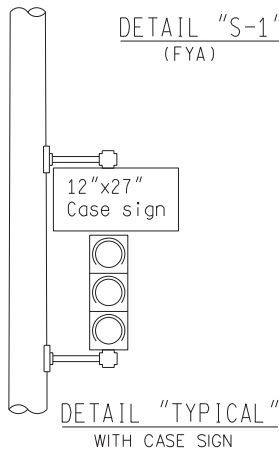
DETAIL "S-1"
(FYA)

DETAIL "T-1"
(FYA)

DETAIL "U-1"
(FYA)

DETAIL "V-1"
(FYA)

Flashing Yellow Arrow (FYA)

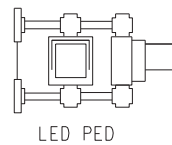


RCOC Mounting Detail (*) see note

NOTES:

- 1) The relative position of 2-Way T.S. & pedestrian bracket arm signals within the bracket assembly shall be reversed (i.e. the signal nearest the pole goes to the outside of the bracket assembly & the outside signal goes inboard or nearest to pole) according to the plan view to provide clear vehicular and pedestrian viewing.
- 2) Pipe assembly shall be of such length and height as to accommodate traffic signals and pedestrian signals for proper maintenance and clear vehicular and pedestrian viewing.
- 3) Pipe assembly shall be of such length and height as to accommodate an illuminated (12"x27") case sign for proper maintenance and clear vehicular viewing.
- 4) Bracket lengths are 16 inches for LED pedestrian signals and LED pedestrian countdown signals.
- 5) For poles located 6' or less from face of curb, contact Engineer for traffic and/or pedestrian bracket type and orientation if field installation requires a change from information shown on the plans.
- 6) Tolerance within +/- 1/8" for bracketing.

(*) For projects maintained by the Road Commission for Oakland County (RCOC), use the bottom heights and bracket assemblies as shown for the RCOC mounting detail.

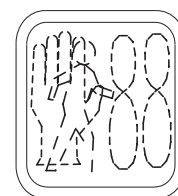


LED PED

NOTE:
Walking person and hand symbol are filled.



LED PED
(filled)



Countdown
LED PED
(filled symbols)

NOT TO SCALE

MICHIGAN DEPARTMENT OF TRANSPORTATION
BUREAU OF HIGHWAYS DELIVERY STANDARD PLAN

(SPECIAL DETAIL)
FHWA APPROVAL DATE

File: RefDoc/TR/Signals/Web/Sp Det/Fin/SIG340A.dgn

Rev. 02/16/17

PLAN DATE

SIG-340-A

SHEET
2 of 2